

BANNER ENVIRONMENTAL ENGINEERING
CONSULTANTS LTD.

HUSKY SLATER RIVER
ELECTRICAL POWER DRAWINGS

PROJECT # 136 – 1A
E01

136-1A-E01-D01
136-1A-E01-D02
136-1A-E01-D03

TITLE PAGE
TRANSFORMER POWER DISTRBUTION SLD
SLATER RIVER LOAD ESTIMATION

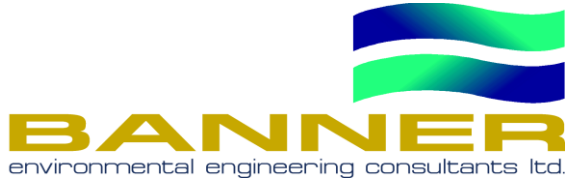
THE INFORMATION CONTAINED IN THIS DRAWING IS THE SOLE
PROPERTY OF BANNER ENVIRONMENTAL ENGINEERING CONSULTANTS.
ANY REPRODUCTION IN PART OR AS A WHOLE WITHOUT THE WRITTEN
PERMISSION OF BANNER ENVIRONMENTAL ENGINEERING IS PROHIBITED.

REVISION DATE	DRAWN BY	APPD BY	REVISION
2013-08-19	DTKN		IFC
2013-09-04	DTKN		AS BUILT

DRAWING NUMBER:
136-1A-E01-D01

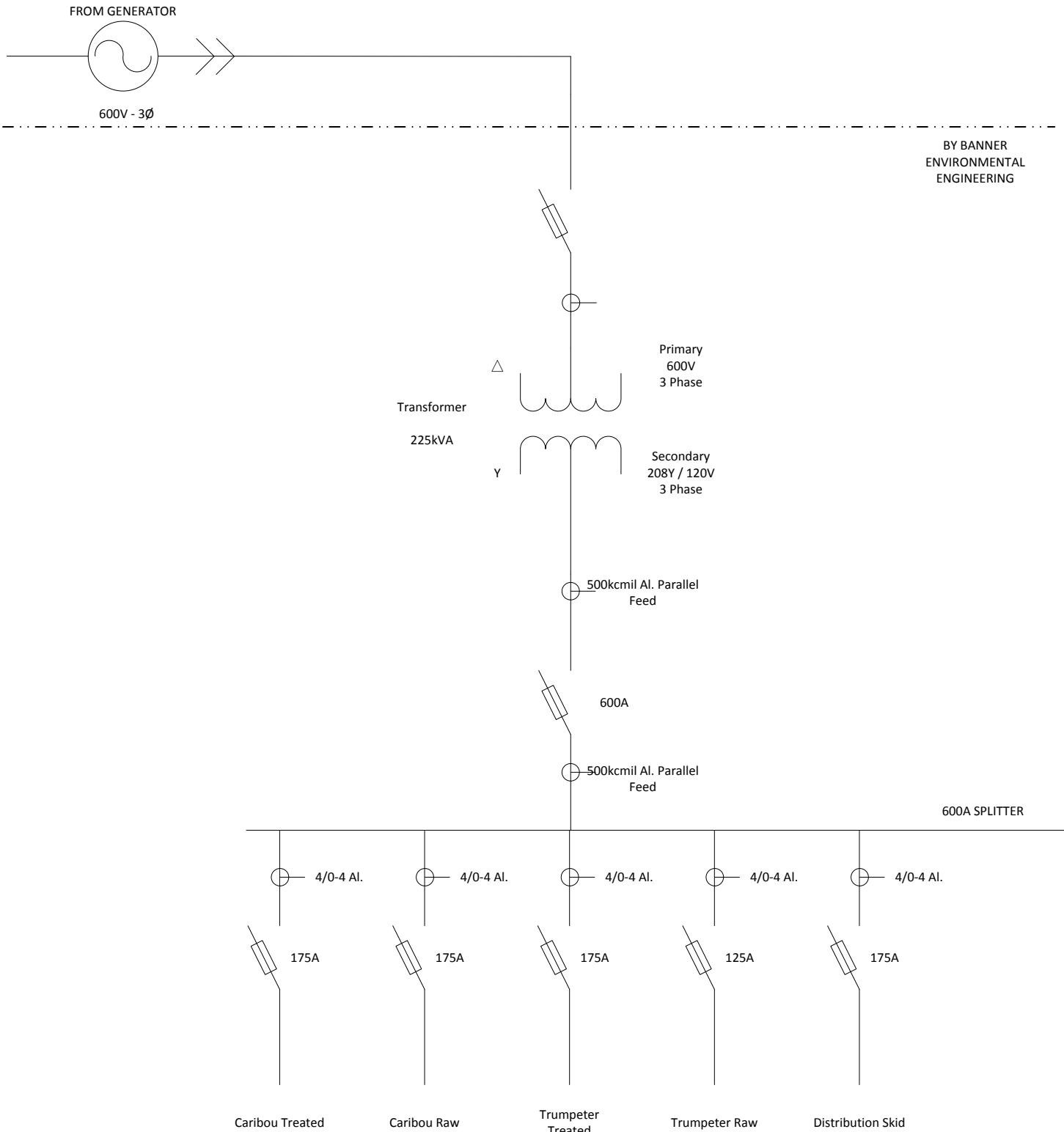
DESCRIPTION:
TITLE

PROJECT:
HUSKY SLATER RIVER



NOTES

1.THE INFORMATION CONTAINED IN THESE DRAWINGS ARE THE SOLE PROPERTY OF BANNER ENGINEERING CONSULTANTS. ANY REPRODUCTION IN PART OR AS A WHOLE WITHOUT THE WRITTEN PERMISSION OF BANNER ENVIRONMENTAL ENGINEERING IS PROHIBITED.
2.AS DRAWINGS CAN BE DIGITALLY REPRODUCED. ONLY STAMPED ORIGINALS CAN BE GUARANTEED AS AUTHENTIC.



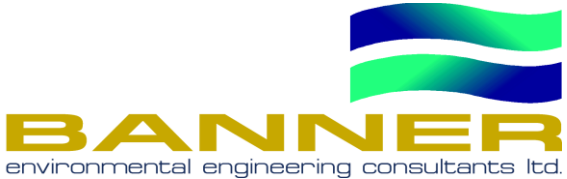
THE INFORMATION CONTAINED IN THIS DRAWING IS THE SOLE PROPERTY OF BANNER ENVIRONMENTAL ENGINEERING CONSULTANTS. ANY REPRODUCTION IN PART OR AS A WHOLE WITHOUT THE WRITTEN PERMISSION OF BANNER ENVIRONMENTAL ENGINEERING IS PROHIBITED.

REVISION DATE	DRAWN BY	APPD BY	REVISION
2013-08-19	DTKN		IFC
2013-09-04	DTKN		AS BUILT

DRAWING NUMBER:
136-1A-E01-D02

DESCRIPTION:
TRANSFORMER POWER DISTRIBUTION SLD

PROJECT:
HUSKY SLATER RIVER



NOTES

1.THE INFORMATION CONTAINED IN THESE DRAWINGS ARE THE SOLE PROPERTY OF BANNER ENGINEERING CONSULTANTS. ANY REPRODUCTION IN PART OR AS A WHOLE WITHOUT THE WRITTEN PERMISSION OF BANNER ENVIRONMENTAL ENGINEERING IS PROHIBITED.

2.AS DRAWINGS CAN BE DIGITALLY REPRODUCED. ONLY STAMPED ORIGINALS CAN BE GUARANTEED AS AUTHENTIC.

ELECTRICAL LOAD LIST						FULL LOAD
1) Caribou Treated						
	Item	Voltage	Amperage(per	Phase	VA(per)	Qty VA
	Pumps	208	24.0	3	8646	2 17293
	Heater 1	208	24.0	3	8646	1 8646
	Heater 2	208	16.0	3	5764	1 5764
	Heater 3	208	16.0	1	3328	1 3328
	Heater 4	208	16.0	1	3328	1 3328
2) Caribou Raw						
	System 1 Pump 1	208	12.0	3	4323	1 4323
	System 1 Pump 2	208	12.0	3	4323	1 4323
	System 2 Pump 1	208	12.0	3	4323	1 4323
	System 2 Pump 2	208	12.0	3	4323	1 4323
	Waste Water Pump	208	12.0	3	4323	1 4323
	Heater 1	208	24.0	3	8646	1 8646
	Heater 2	208	16.0	1	3328	1 3328
	Heater 3	208	16.0	1	3328	1 3328
	Heater 4	208	16.0	3	5764	1 5764
3) Trumpeter Treated						
	Panel Plug	208	24.0	1	4992	1 4992
	Panel Heater	208	16.0	1	3328	1 3328
	Chemical Feed Pump	120	12.0	1	1440	1 1440
	Pump Panel	208	32.0	1	6656	1 6656
	Heater 1	208	24.0	3	8646	1 8646
	Heater 2	208	16.0	1	3328	1 3328
	Heater 3	208	24.0	1	4992	1 4992
	Heater 4	208	16.0	3	5764	1 5764
4) Trumpeter Raw						
	Pump Control Box	208	24.0	1	4992	1 4992
	Heater 1	208	16.0	1	3328	1 3328
	Heater 2	208	16.0	3	5764	1 5764
	Heater 3	208	16.0	1	3328	1 3328
5) Distribution Skid						
	Section 1 Heaters	208	10.8	1	2246	2 4493
	Section 2 Heaters	208	18.0	1	3750	2 7500
	Tank Heaters	208	18.7	3	6751	2 13503
	Pumps	208	12.8	3	4611	3 13834
	Heat Trace	120	25.0	1	5	600 3000

Total 179931 VA Full Load Total Transformer Load (%) 80%
499.8 Amps@120/208VAC, 3Phase @ PF=1

Spare 45069 VA

THE INFORMATION CONTAINED IN THIS DRAWING IS THE SOLE PROPERTY OF BANNER ENVIRONMENTAL ENGINEERING CONSULTANTS. ANY REPRODUCTION IN PART OR AS A WHOLE WITHOUT THE WRITTEN PERMISSION OF BANNER ENVIRONMENTAL ENGINEERING IS PROHIBITED.

REVISION DATE	DRAWN BY	APPD BY	REVISION
2013-08-19	DTKN		IFC
2013-09-04	DTKN		AS BUILT

DRAWING NUMBER:
136-1A-E01-D03

DESCRIPTION:
SLATER RIVER LOAD ESTIMATION

PROJECT:
HUSKY SLATER RIVER

